

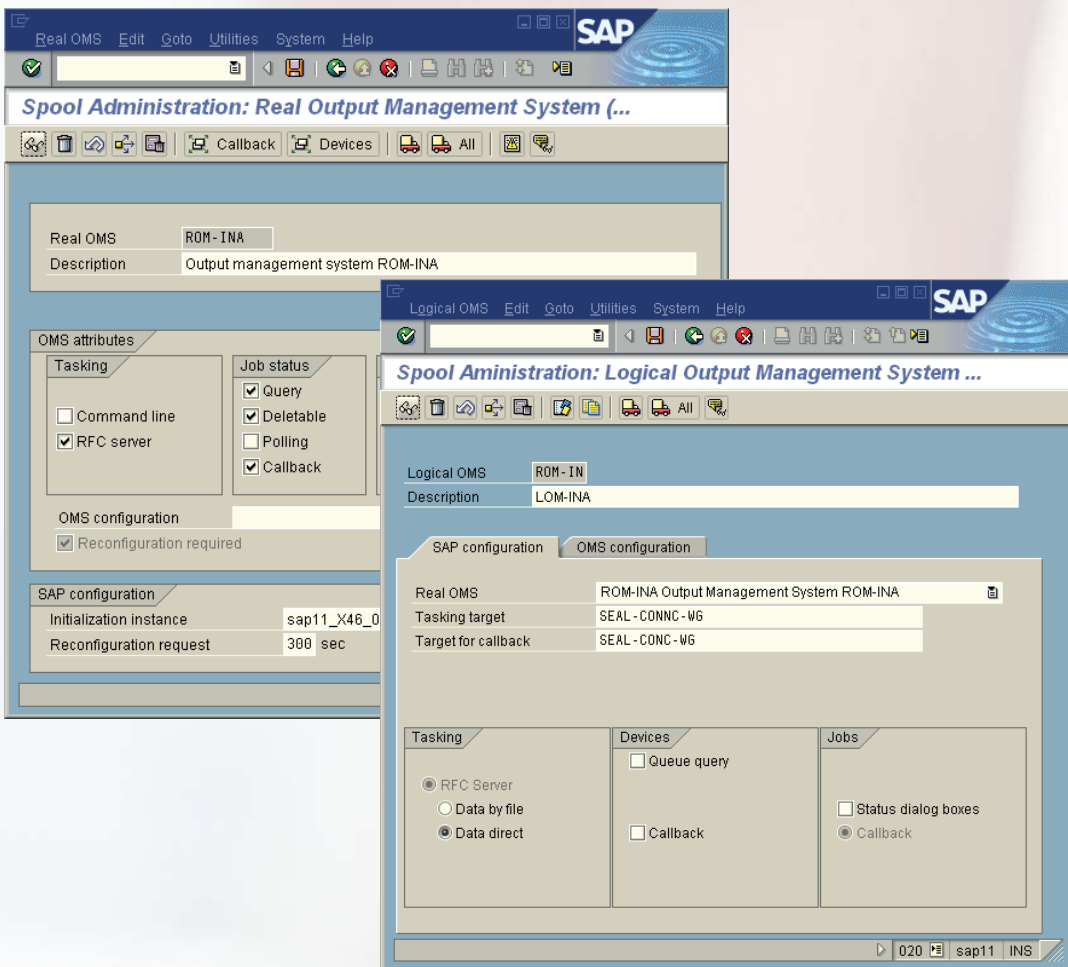
SEAL Systems Integration for SAP® PLM

BC-XOM INTERFACE

OUTPUT OF SAP SPOOL JOBS VIA PLOSSYS® //

The BC-XOM interface enables the processing of SAP standard print output via document output management solutions from SEAL Systems.

The interface is available for different connection technologies. Automatic repetition of transfer, load balancing, and multi server support afford high availability and quick throughput. The output management system returns output job status and device data into SAP.



BC-XOM Interface

The PLOSSYS® integration supports two methods:

- PLOSSYS® netdome as the spool system without preparation functions
- PLOSSYS® netdome as preparation and spool system

⋮ Connection as Spooler

PLOSSYS® netdome receives output jobs from the SAP spool system. These jobs contain printer specific prepared data. They are processed together with output jobs from other systems, like CAD, PLM, Windows or UNIX, in correct order with controlled priorities. Afterwards they are directed to the output devices and processes, which are connected to PLOSSYS® netdome.

The advantages of this connection are:

- central administration of output devices and processes,
- system independent availability of existing output devices and processes,
- company-wide spool processing of output jobs out of different systems.

⋮ Benefit

The output management system from SEAL Systems additionally contains the following functions:

- document preparation,
- device control,
- administration.

PLOSSYS® netdome is a uniform company-wide platform for distribution, control and administration of print jobs and devices. Printer and plotter have to be installed centrally and defined only once.

⋮ Connection with Print Preparation

PLOSSYS® netdome receives output jobs from the SAP spool system in the SAP internal format SAPGOF. These are processed and sent back to the corresponding device or process specific output format (e.g. printer language or digital paper format) – in correct order with controlled priorities.

Additional advantages:

- relief of the SAP processing server via redirection of the spool format and relocation of the computer load to the PLOSSYS® netdome server
- any redirection of output jobs to all output devices and processes, which are connected to PLOSSYS® netdome.
- optionally the connection of a form manager is possible

⋮ Feedback

In the SAP spool system the output status of the print jobs is updated by PLOSSYS® netdome contemporarily for user information.

⋮ Connection types

- JRFC
- RFC server
- oms_submit
- oms_submit with oms_server

⋮ Product Code

Z-BCXOM

⋮ Requirements

- SAP R/3® Rel. 4.0 or higher
- PLOSSYS® netdome Rel. 3.1.7 or higher
- K-GOF, interpreter for SAPGOF format (only for connection with print preparation)
- Optional SEAL Systems ODM Output Device Monitor

⋮ Security

Ordering via oms_submit and the transfer with oms_server is exceptionally suited, if high availability is necessary:

- Automatic attempts of repetition
- Support of PLOSSYS® multi server environments
- Support of PLOSSYS® load balancing

⋮ System Environment

The OMS interface is available for SunOS, AIX4, UP-UX.10 and for Windows.

⋮ Delivery Size

- Installation of a physical/ logical output management system in SAP R/3®
- Installation of a central printer type
- Installation of a communication connection for ordering/feedback of spool jobs via RCF connection
- License interface software

⋮ Licensing

The licensing is done per PLOSSYS® netdome server and SAP system (production, development, and test system).