



PLOSSYS® netdome

PAD – PRINT JOB DIALOG →

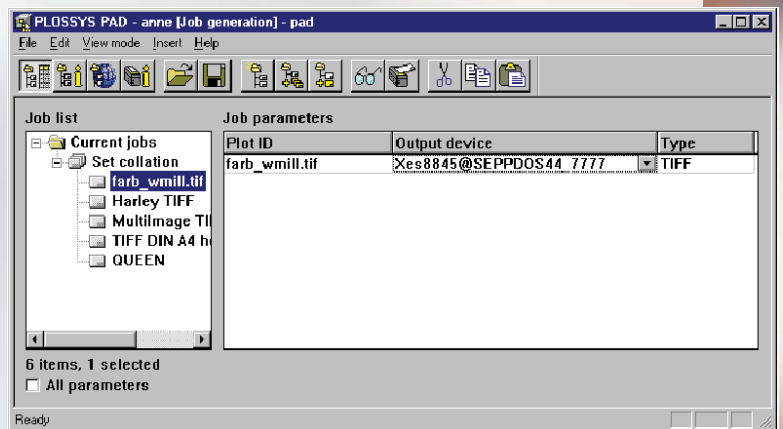
THE PROFESSIONAL PLOSSYS CLIENT FOR PRINT ORDERING

// The PLOSSYS Print Job Dialog links applications with the output services of PLOSSYS netdome. Drawings and documents are compiled to form print/repro jobs and then transferred for output.

PLOSSYS netdome controls the output for all enterprise-wide peripherals. All features of a modern output system can be conveniently utilized by all users.

::: USER FUNCTIONS

A modern user interface provides the user with all functions required for powerful print/repro services.



Creating a print/repro job

- Compiling a single job or set collation
- Starting the print/repro job

Customizing the print environment

- Creating a list of preferred output devices (even from different print servers) and print/repro parameters
- Setting preferred print file directories
- Setting default print file identifiers

Additional services

- Quick scan functionality for identifying print file types and print sizes automatically
- Execution of visualizing tools

Setting print/repro parameters

- Using and changing default print/repro parameters
- Changing preferred print/repro parameters quickly with a clearly displayed template
- Displaying and changing of extended print/repro parameters

Job tracking/ information functions

- Tracking some jobs – all print information of the print server is transparent
- Information on jobs in the system
- Displaying print server status
- Displaying printer status
- Selecting print server

File functions

- Save, repeat and edit print lists

Job control

- Repeat, edit, delete print/repro jobs

Setting-up the desktop environment

- Display as tree or as list/table
- Filter functions for file selection options
- Filter functions for list display
- Setting-up of visualizing tools
- Saving of desktop configuration

PAD – Print Job Dialog

::: THE INTEGRATION INTERFACES

One of the remarkable features of the PAD is its versatile integration interfaces. With these it can be adapted to the respective environment easily and flexibly. Wherever print/repro files are created – PAD can be implemented to be extensively beneficial. Various methods which have been proven in practice, ensure, that users, system administrators and system integrators can use the Print Job Dialog for many applications.

Interactive Job Creation

All users can compile and transmit print files easily. This is the main purpose of the PAD Print Job Dialog.

Batch Job Creation

Print files are directly transferred from an application to the PAD Print Job Dialog. For printing the preset print/repro parameters are used. The processing is done in the background.

Script and Command Line Control

Special commands can operate the PAD Print Job Dialog by remote control. For automating sequences of operations these commands can be packed in scripts.

Application Integration

The PAD Print Job Dialog is called directly from the CAD or EDM/PDM, when the print file is transferred. One click is enough to start the print job for output on the preferred printer. If necessary, all the configured print/repro parameters can be set or changed.

DDE/OLE Functionality (Windows version)

The PAD Print Job Dialog is integrated in Windows applications and can be controlled remote with DDE commands. It represents an interface for system integrators.

Client-Multiserver Technology

The PAD Print Job Dialog links the workstation with all PLOSSYS netdome servers and printers – at the sites, across sites and world-wide.

::: MULTILINGUAL FOR GLOBAL USE

PLOSSYS PAD Print Job Dialog has been designed for world-wide use. The standard surface is in German or English. Other language versions can be configured easily, if necessary.

::: Installation

With Windows the PAD Print Job Dialog is installed via installshield. With UNIX an executable file has to be copied onto the target directory. On the print/plot server, prepared configuration files and programs are copied.

::: System Environment

PLOSSYS netdome output manager version 3.0 or higher.
 Modules: PGP, PGR or PGV
 When using PLOSSYS WIN Link PGP is mandatory.
 Operating systems:

- Windows XP, 2003, Vista, 7, 2008 R2
- UNIX, Linux

::: Scope of Delivery

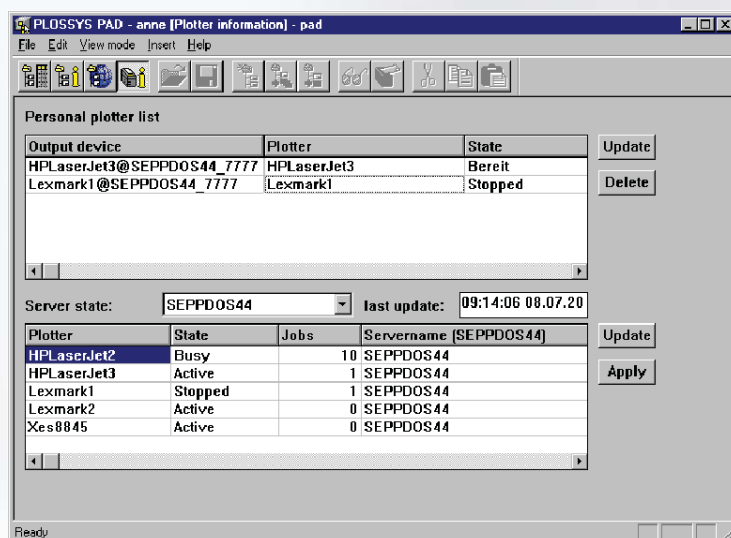
CD with software for the chosen operating system environment.
 Documentation as PDF file.

::: Related Products

B-P2P
 Print-to-PLOSSYS. The thin client for fast print job ordering

::: Product Code

B-PAD





PLOSSYS® netdome

PAD – PRINT JOB DIALOG

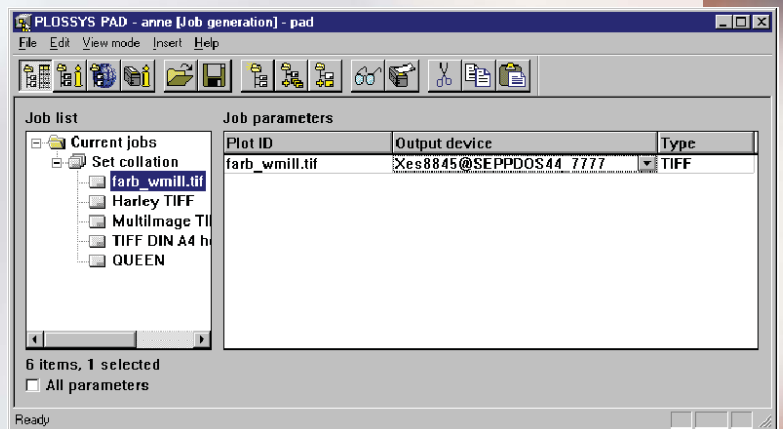
THE PROFESSIONAL PLOSSYS CLIENT FOR PRINT ORDERING

// The PLOSSYS Print Job Dialog links applications with the output services of PLOSSYS netdome. Drawings and documents are compiled to form print/repro jobs and then transferred for output.

PLOSSYS netdome controls the output for all enterprise-wide peripherals. All features of a modern output system can be conveniently utilized by all users.

USER FUNCTIONS

A modern user interface provides the user with all functions required for powerful print/repro services.



Creating a print/repro job

- Compiling a single job or set collation
- Starting the print/repro job

Customizing the print environment

- Creating a list of preferred output devices (even from different print servers) and print/repro parameters
- Setting preferred print file directories
- Setting default print file identifiers

Additional services

- Quick scan functionality for identifying print file types and print sizes automatically
- Execution of visualizing tools

Setting print/repro parameters

- Using and changing default print/repro parameters
- Changing preferred print/repro parameters quickly with a clearly displayed template
- Displaying and changing of extended print/repro parameters

Job tracking/information functions

- Tracking some jobs – all print information of the print server is transparent
- Information on jobs in the system
- Displaying print server status
- Displaying printer status
- Selecting print server

File functions

- Save, repeat and edit print lists

Job control

- Repeat, edit, delete print/repro jobs

Setting-up the desktop environment

- Display as tree or as list/table
- Filter functions for file selection options
- Filter functions for list display
- Setting-up of visualizing tools
- Saving of desktop configuration

PAD – Print Job Dialog

::: THE INTEGRATION INTERFACES

One of the remarkable features of the PAD is its versatile integration interfaces. With these it can be adapted to the respective environment easily and flexibly. Wherever print/repro files are created – PAD can be implemented to be extensively beneficial. Various methods which have been proven in practice, ensure, that users, system administrators and system integrators can use the Print Job Dialog for many applications.

Interactive Job Creation

All users can compile and transmit print files easily. This is the main purpose of the PAD Print Job Dialog.

Batch Job Creation

Print files are directly transferred from an application to the PAD Print Job Dialog. For printing the preset print/repro parameters are used. The processing is done in the background.

Script and Command Line Control

Special commands can operate the PAD Print Job Dialog by remote control. For automating sequences of operations these commands can be packed in scripts.

Application Integration

The PAD Print Job Dialog is called directly from the CAD or EDM/PDM, when the print file is transferred. One click is enough to start the print job for output on the preferred printer. If necessary, all the configured print/repro parameters can be set or changed.

DDE/OLE Functionality (Windows version)

The PAD Print Job Dialog is integrated in Windows applications and can be controlled remote with DDE commands. It represents an interface for system integrators.

Client-Multiserver Technology

The PAD Print Job Dialog links the workstation with all PLOSSYS netdome servers and printers – at the sites, across sites and world-wide.

::: MULTILINGUAL FOR GLOBAL USE

PLOSSYS PAD Print Job Dialog has been designed for world-wide use. The standard surface is in German or English. Other language versions can be configured easily, if necessary.

::: Installation

With Windows the PAD Print Job Dialog is installed via installshield. With UNIX an executable file has to be copied onto the target directory. On the print/plot server, prepared configuration files and programs are copied.

::: System Environment

PLOSSYS netdome output manager version 3.0 or higher.
Modules: PGP, PGR or PGV
When using PLOSSYS WIN Link PGP is mandatory.
Operating systems:

- Windows XP, 2003, Vista, 7, 2008 R2
- UNIX, Linux

::: Scope of Delivery

CD with software for the chosen operating system environment.
Documentation as PDF file.

::: Related Products

B-P2P
Print-to-PLOSSYS. The thin client for fast print job ordering

::: Product Code

B-PAD

