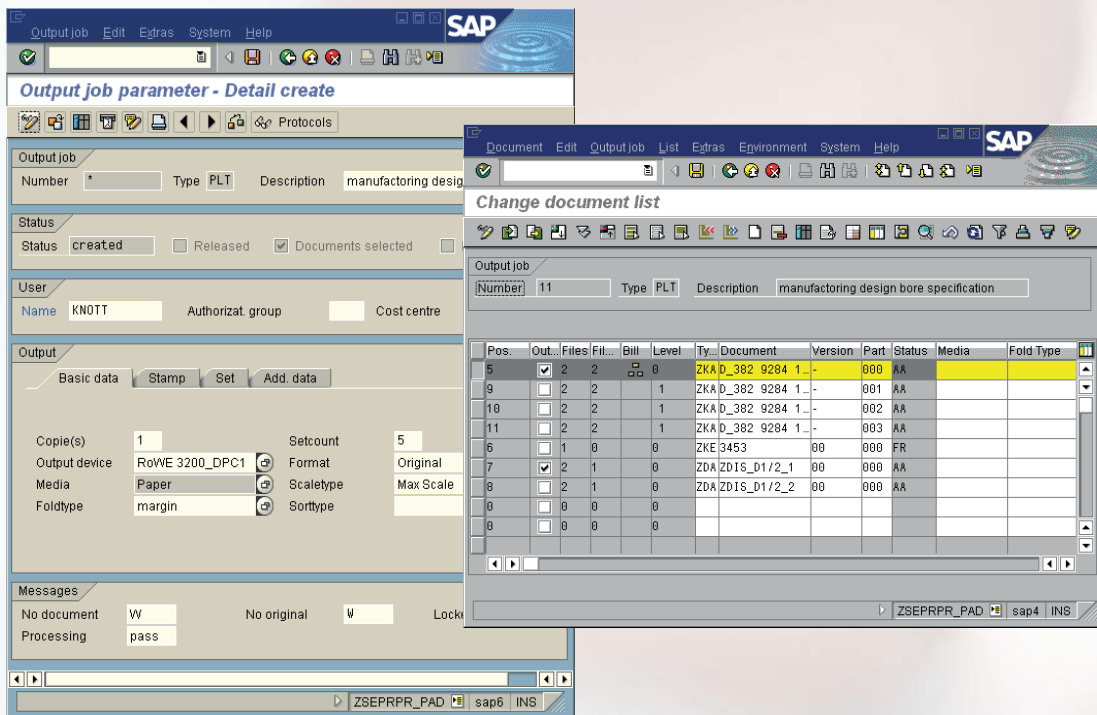


# SEAL Systems Integration for SAP® PLM

## DMS REPRO USER INTERFACE

### SEARCH, COLLECT AND DISTRIBUTE DOCUMENTS //

With DMS Repro from SEAL Systems, SAP DMS administrated documents can easily be collected, printed, and distributed. SAP transactions enable editing and saving of lists of documents. Parameters for output control can be set for small and large size document printing as well as for electronic distribution of documents. An output job for the SEAL Systems Document Output Management System (DOM) consists of three SAP objects: Document list, job parameter list, and recipient list (optional). Document output can be made simple and efficient by setting defaults for most parameters.



### III INTEGRATION/ DOCUMENT TRANSFER

- interactive as Transaction
- SAP DMS
- from function „Print Originals“
- Products tructure browser
- CAD Desktop
- Classification

### III OUTPUT JOBS

- Search
- Edit
- Create
- Delete
- Store
- Output
- Print process tracing/ Feedback

### III OUTPUT PARAMETER

- Copyy/Set counter
- Output media/device
- Finishing options
- Scaling
- Set collation/Banner/Trailer pages
- Stamps/water marks
- Device specific options

# DVS Repro User Interface

## ::: Benefit

The transaction-controlled document output, using an order-related collection function, enables secure identification of all DMS-administrated documents, eg of a production order. Filtering functions provide safe control of document distribution.

DMS Repro replaces customer-specific solutions. The document distribution becomes faster, quicker and more economically.

## ::: Recipient

- Preset job parameters
- Recipient lists/  
Distributor lists
- Global/Private settings

## ::: Document List

- Simple filling from SAP procedures
- Easier CVo4N usage
- Quick direct input of document data
- Exploding of document lists
- Document-specific output parameters
- Editing/Sorting functions
- Remove duplicate copies
- View documents/DIS

## ::: Output

- Via SEAL Systems DOM
- All printers and plotters, all manufacturers and models
- Electronically as file, e-mail, CD or via WEB
- All common document storage formats

## ::: Adjustable Processing Options

- Warning/Error situations
- Documents existing/  
not found
- Scan order/Proxy page
- Options: split/scan/pass

## ::: Licensing

Per SAP server environment (test, QA or production system)

## ::: Convenience Settings

- User-specific default settings
- Receiver-specific default settings
- Individual device lists
- Original file selection methods

## ::: Technology

- Client/Server – as SAP GUI
- Browser – by SAP ITS

## ::: System requirements

SAP 4.6c

DMS RPO2

DMS Repro Server

PGP/PGR/PGV/gXn

PLOSSYS® Basic system  
or gXnetplot

## ::: Related Products

DMS-PGUI

Interface as described, but with reduced functionality

DMS-BOM

Bill-of-material: Identify and output documents

DMS-PUR

Ordering: Identify and output documents

DMS-PRO

Production order: Identify and output documents

DMS-PM

Maintenance order: Identify and output documents

## ::: Installation

SAP Transport

## ::: Product Code

DMS-RGUI

## ::: Language Support

German, English, French

**Note:** Further features and settings are described in the data sheet „DMS Repro Server“

